

SECTION II

TM9-2320-273-24P

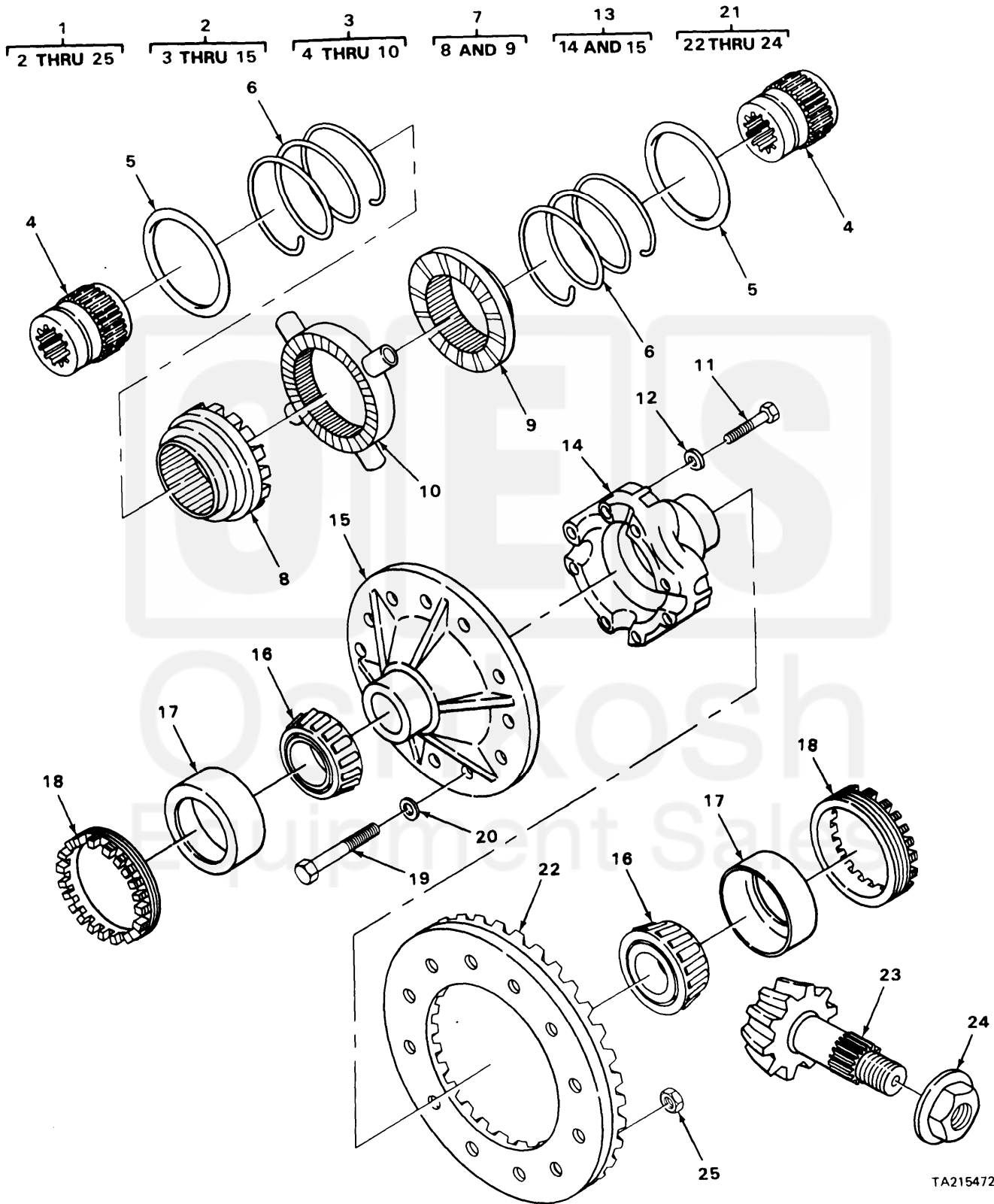


FIGURE 97. DIFFERENTIAL DRIVE GEAR AND PINION ASSEMBLY (MODEL M915).

Current part is item (16) on diagram. Available at www.oshkoshequipment.com

SECTION II (1) ITEM NO	(2) SMR CODE	(3) FSCM	TM9-2320-273-24P (4) PART NUMBER	(5) DESCRIPTION AND USABLE ON CODE (UOC)	(6) QTY
GROUP:1102 DIFFERENTIAL					
FIGURE 97. DIFFERENTIAL DRIVE GEAR AND PINION ASSEMBLY (MODEL M915).					
1	PAHHH	78500	A28-3235-L-1156-4.4401	...DIFFERENTIAL GEAR AND PINION ASSEMBLY UOC:U21	1
2	PAHHH	78500	A27-3235-L-1156-4.4401	...DIFFERENTIAL ASSY UOC:U21	1
3	PAOZZ	93251	68770	...CLUTCH AND SPIDER UOC:U21	1
4	XAHZZ	93251	66934	...GEAR, SIDE UOC:U21	2
5	PAHZZ	93251	66843	...GASKET UOC:U21	2
6	PAHZZ	93251	66842	...SPRING, HELICAL, COMP UOC:U21	2
7	PAHZZ	93251	67468	...CLUTCH, POSITIVE UOC:U21	2
8	XAHZZ	93251	66852	...RING, HOLDOUT UOC:U21	1
9	XAHZZ	93251	66921	...CLUTCH UOC:U21	1
10	PAHZZ	93251	67054	...SPIDER ASSEMBLY, CEN UOC:U21	1
11	PAHZZ	78500	15-X-1517	...SCREW, CAP, HEXAGON UOC:U21	16
12	PAHZZ	38597	50-4-18-17-7	...WASHER, FLAT UOC:U21	16
13	PAHZZ	78500	A26-3235-L-1156	...CASE, DIFFERENTIAL UOC:U21	1
14	XAHZZ	78500	3235-H-1360	...CASE-HALF-PLAIN UOC:U21	1
15	XAHZZ	78500	3235-L-1156	...CASE, HALF-FLANGED UOC:U21	1
16	PAHZZ	60038	JM716649	...CONE AND ROLLERS, TA UOC:U21	2
17	PAHZZ	78500	JM-716610	...CUP, TAPERED ROLLER UOC:U21	2
18	PAHZZ	78500	2214-G-163	...RING, BEARING ADJUST UOC:U21	2
19	PAHZZ	30076	287736	...BOLT UOC:U21	12
20	PAHZZ	78500	1229U1503	...WASHER, FLAT UOC:U21	12
21	PAHHH	78500	A-37530-2	...PARTS KIT, DRIVING A UOC:U21	1
22	XAHZZ	78500	37530	...GEAR, BEVEL UOC:U21	1
23	XAHZZ	78500	37575	...PINION	1
24	PBHZZ	78500	1227-N-898	...NUT, PLAIN, HEXAGON	1

Current part is item (16) on diagram. Available at www.oshkoshequipment.com

Current part is item (16) on diagram. Available at www.oshkoshequipment.com

SECTION II (1)	SMR (2)	FSCM (3)	PART NUMBER (4)	DESCRIPTION AND USABLE ON CODE (UOC) (5)	QTY (6)
25	PAHZZ	78500	NL-110-1	UOC:U21 ...NUT,HEX UOC:U21	12
END OF FIGURE					



Current part is item (16) on diagram. Available at www.oshkoshequipment.com